



sensors



an Open Access Journal by MDPI

Sensors and Sensing Technologies for Traffic, Driving and Transportation

Guest Editors:

Dr. Duo Lu

Department of Computer Science
and Physics, Rider University,
New Jersey, NJ 08648, USA

Dr. Bharatesh Chakravarthi

Computer Science and
Engineering, School of
Computing and Augmented
Intelligence, Ira. A. Fulton
Schools of Engineering, Arizona
State University, Tempe, AZ
85281, USA

Deadline for manuscript
submissions:

10 June 2025

Message from the Guest Editors

You are invited to submit to this Special Issue, entitled “Sensors and Sensing Technologies for Traffic, Driving and Transportation”, of *Sensors*. The advancement of sensors and sensing technologies for traffic, driving, and transportation has transformed the landscape of intelligent transportation systems (ITSs) and intelligent vehicles.

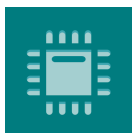
This Special Issue aims to highlight innovative research on novel sensors, computer vision, artificial intelligence, sensor data processing, sensor data visualization, and the application of sensing technologies in intelligent transportation systems (ITSs) and intelligent vehicles (IVs). We welcome contributions from all fields related to sensors and sensing technologies applied in traffic, driving, and transportation, including, but not limited to, the following:

- Novel sensor modalities (LiDAR, radar, cameras, etc.);
- Collaborative sensing and V2X communication;
- Sensing technologies for autonomous driving systems;
- Sensing technologies for advanced driver-assistance systems (ADASs);
- Environmental sensing for intelligent transportation;
- Applications of sensing technologies in ITSs and IVs.



mdpi.com/si/214412

Special Issue



sensors



an Open Access Journal by MDPI

Editor-in-Chief

Prof. Dr. Vittorio M. N. Passaro

Dipartimento di Ingegneria
Elettrica e dell'Informazione
(Department of Electrical and
Information Engineering),
Politecnico di Bari, Via Edoardo
Orabona n. 4, 70125 Bari, Italy

Message from the Editor-in-Chief

Sensors is a leading journal devoted to fast publication of the latest achievements of technological developments and scientific research in the huge area of physical, chemical and biochemical sensors, including remote sensing and sensor networks. Both experimental and theoretical papers are published, including all aspects of sensor design, technology, proof of concept and application. *Sensors* organizes Special Issues devoted to specific sensing areas and applications each year.

Author Benefits

Open Access : free for readers, with [article processing charges \(APC\)](#) paid by authors or their institutions.

High Visibility: indexed within [Scopus](#), [SCIE \(Web of Science\)](#), [PubMed](#), [MEDLINE](#), [PMC](#), [Ei Compendex](#), [Inspec](#), [Astrophysics Data System](#), and [other databases](#).

Journal Rank: JCR - Q2 (*Chemistry, Analytical*) / CiteScore - Q1 (Instrumentation)

Contact Us

Sensors Editorial Office
MDPI, Grosspeteranlage 5
4052 Basel, Switzerland

Tel: +41 61 683 77 34
www.mdpi.com

mdpi.com/journal/sensors
sensors@mdpi.com
[X@Sensors_MDPI](#)